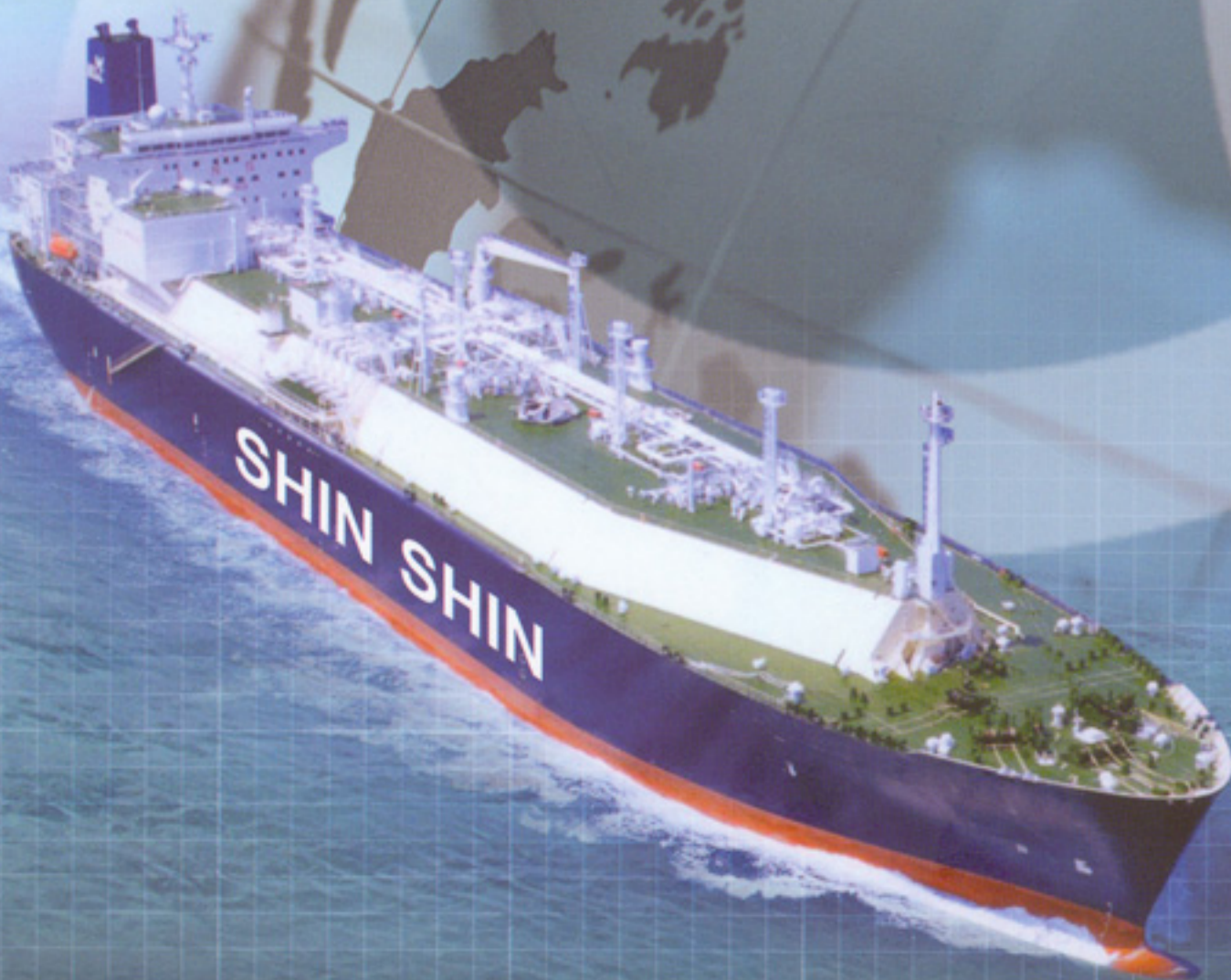
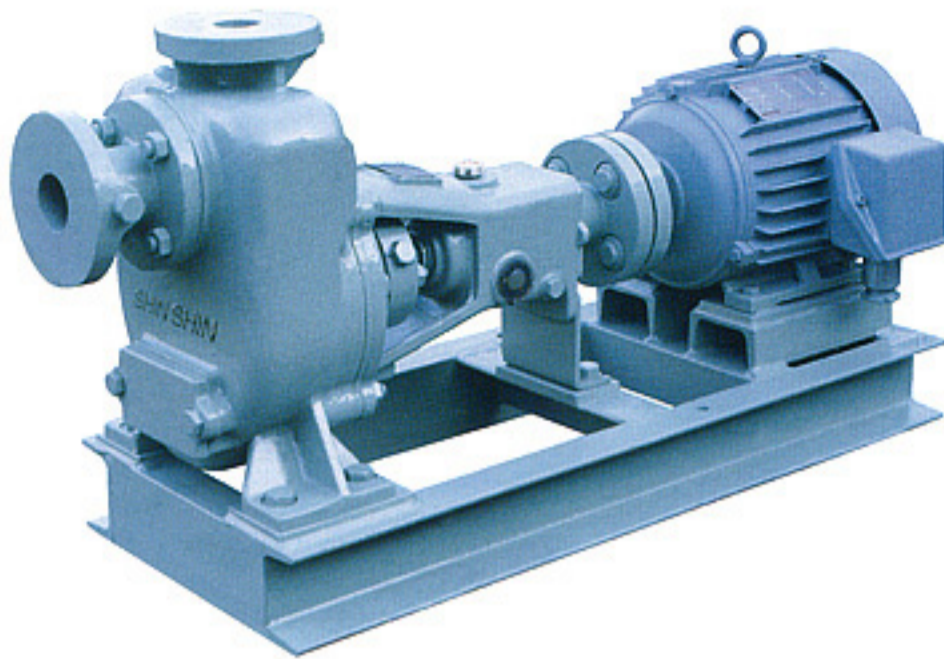


SHIN SHIN MARINE



 SHIN SHIN MACHINERY CO., LTD.



■ Applications

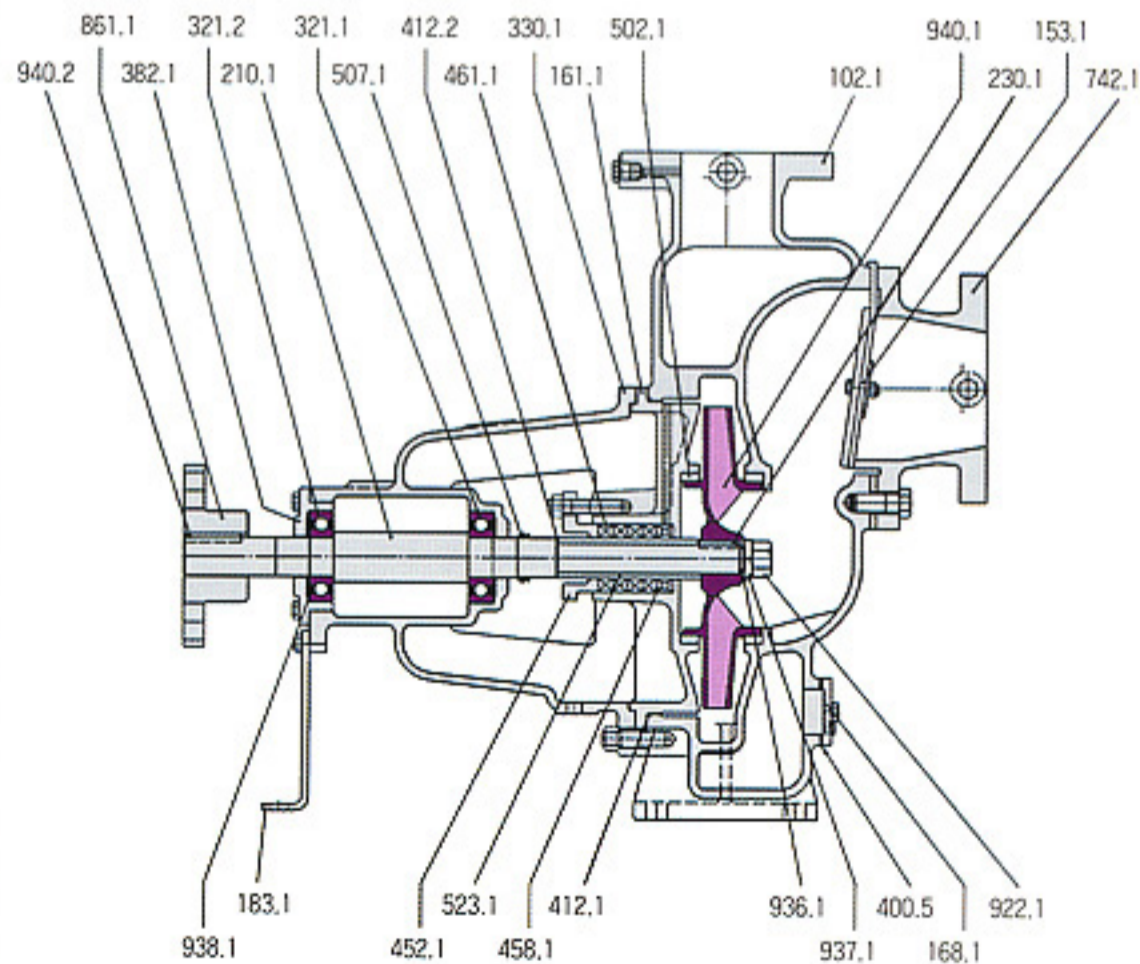
- Fresh water pump
- Fuel valve cooling fresh water pump
- Sanitary pump
- Others

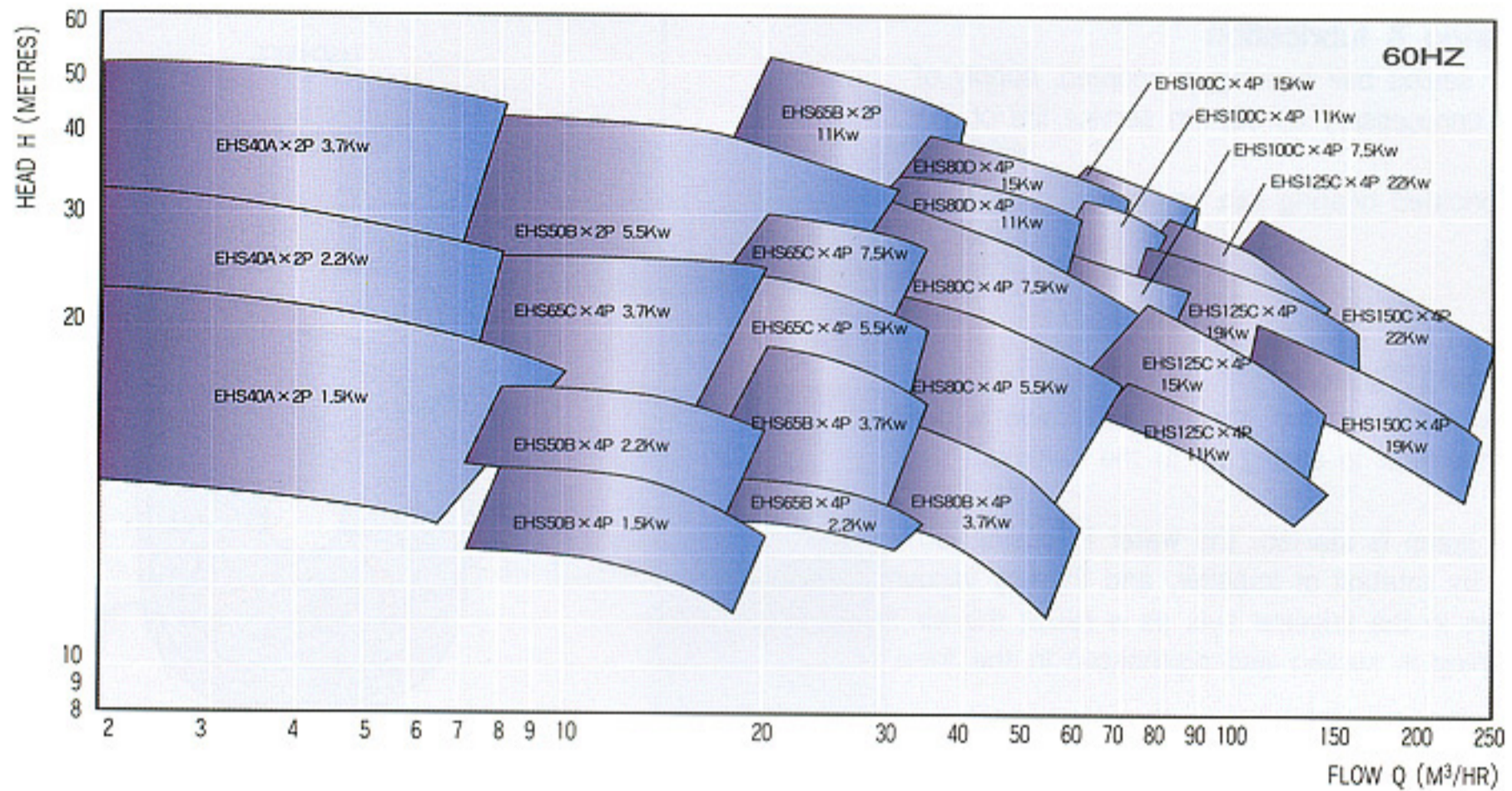
■ Principal Particulars

Item	Model	EHS40A	EHS50B	EHS65B	EHS65C	EHS80B	EHS80C	EHS80D	EHS100C	EHS125C	EHS150C
Rotation		Clockwise viewed from driver end									
Suction bore	(mm)	40	50	65	65	80	80	80	100	125	150
Discharge bore	(mm)	32	40	50	50	65	65	65	80	100	125
Ball bearing	Radial	6304	6305	6305	6305	6305	6307	6308	6307	6308	6308
	thrust	6305	6306	6306	6306	6306	6307	6308	6307	6308	6308
Service life	(hr)	Abv. 20,000hr									
Stuffing box seal		Gland packing or mechanical seal									
Weight	GC(BC) (kg)	29(33)	47(53)	48(55)	63(75)	68(78)	93(107)	103(119)	96(110)	146(168)	166(191)

■ Standard Materials

Part No.	Name Of Part	REQ. NO. FOR 1RMP	For Fresh Water		For Sea Water	
			Name	KS	Name	KS
102.1	VOLUTE CASING	1	CAST IRON	GC200	BRONZE	BC6
153.1	SUCTION BRANCH	1	CAST IRON	GC200	BRONZE	BC6
161.1	CASING COVER	1	CAST IRON	GC200	BRONZE	BC6
168.1	DRAIN COVER	1	CAST IRON	GC200	BRONZE	BC6
183.1	SUPPORT	1	STEEL	SS41	STEEL	SS41
210.1	SHAFT	1	CARBON STEEL	SM45C	STAINLESS STEEL	STS304
230.1	IMPELLER	1	CAST IRON	GC200	PHOSPHOR BRONZE	PBC2
321.1	BALL BEARING	1	BEARING STEEL	STB2	BEARING STEEL	STB2
321.2	BALL BEARING	1	BEARING STEEL	STB2	BEARING STEEL	STB2
330.1	BEARING HOUSING	1	CAST IRON	GC200	CAST IRON	GC200
382.1	BEARING CASE	1	CAST IRON	GC200	CAST IRON	GC200
400.5	GASKET	1	NON ASBESTOS		NON ASBESTOS	
412.1	O-RING	1	EPDM		EPDM	
412.2	O-RING	1	EPDM		EPDM	
452.1	PACKING GLAND	1	CAST IRON	GC200	CAST IRON	GC200
458.1	LANTERN RING	1	BRONZE	BC6	BRONZE	BC6
461.1	PACKING	4	NON METALLIC		NON METALLIC	
502.1	CASING WEAR RING	2	BRONZE	BC6	BRONZE	BC6
507.1	THROWER	1	NBR		NBR	
523.1	SHAFT SLEEVE	1	STAINLESS STEEL	STS304	STAINLESS STEEL	STS304
742.1	NON RETURN VALVE	1	EPDM + COPPER	EPDM+C1120P	EPDM + COPPER	EPDM+C1120P
861.1	COUPLING HALF	1	CAST IRON	GC200	CAST IRON	GC200
922.1	IMPELLER NUT	1	STEEL	SS41	STAINLESS STEEL	STS304
936.1	PLAIN WASHER	1	STEEL	SS41	STAINLESS STEEL	STS304
937.1	SPRING LOCK WASHER	1	HARD STEEL WIRE ROD	HSWR578	STAINLESS STEEL	STS304
938.1	WAVE SPRING	1	SPRING STEEL	SPS6	SPRING STEEL	SPS6
940.1	IMPELLER KEY	1	CARBON STEEL	SM45C	STAINLESS STEEL	STS304
940.2	COUPLING KEY	1	CARBON STEEL	SM45C	CARBON STEEL	SM45C



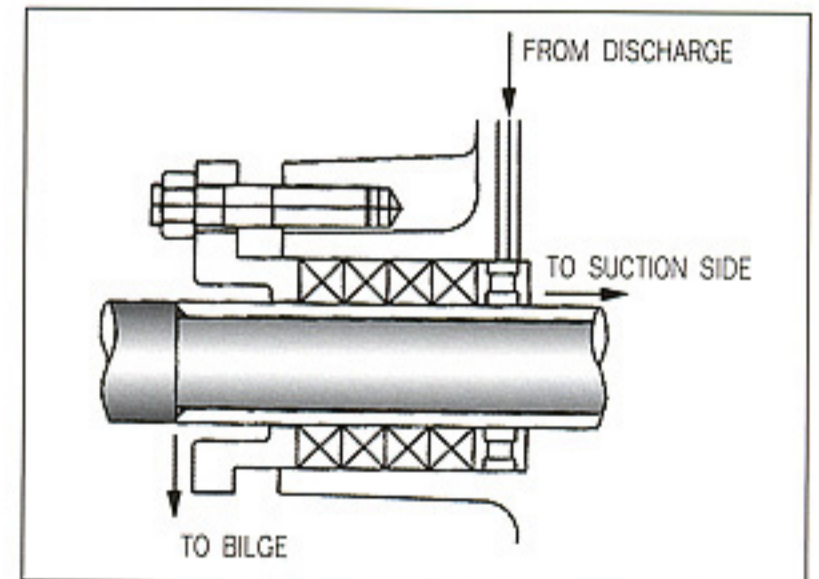


■ **Stuffing Box Seal**

The stuffing box is fitted with gland packing, but a mechanical seal can be fitted if the customer requires it to eliminate gland adjustment

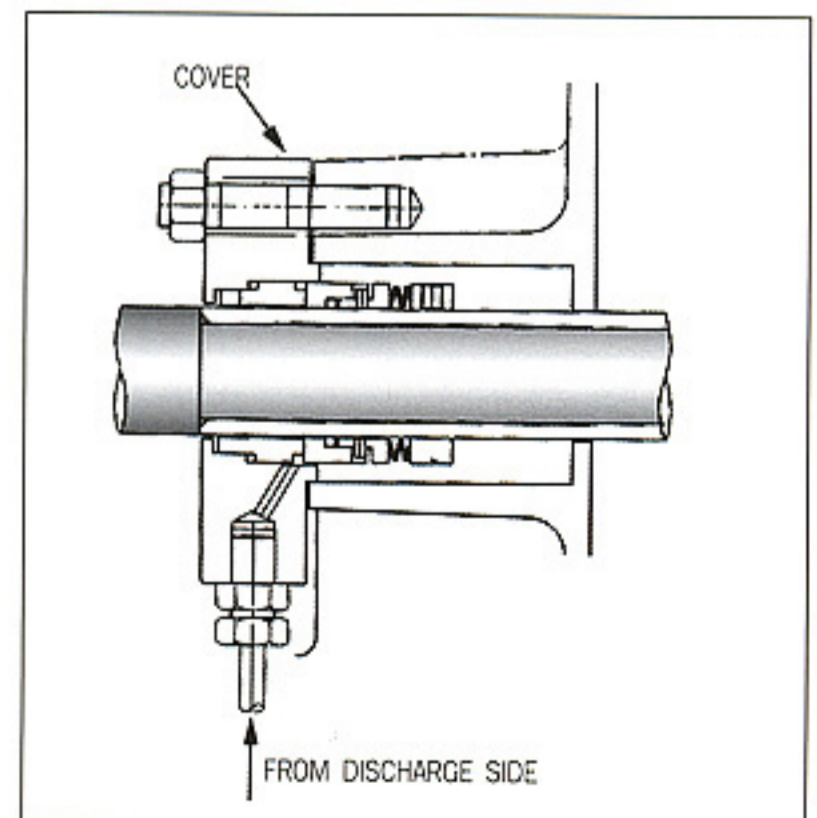
Fitted with gland packing

Sealing water is led to the stuffing box is from the discharge side through the passage in casing, and drained to bilge and the suction side after sealing gland packing



Fitted with mechanical seal

Flushing water is led to the stuffing box from the discharge flange and returned to the suction side after flushing mechanical seal.



■ **Ball bearing & lubrication**

As grease sealed ball bearing is adopted, supply of grease is unnecessary during the service life of bearing.

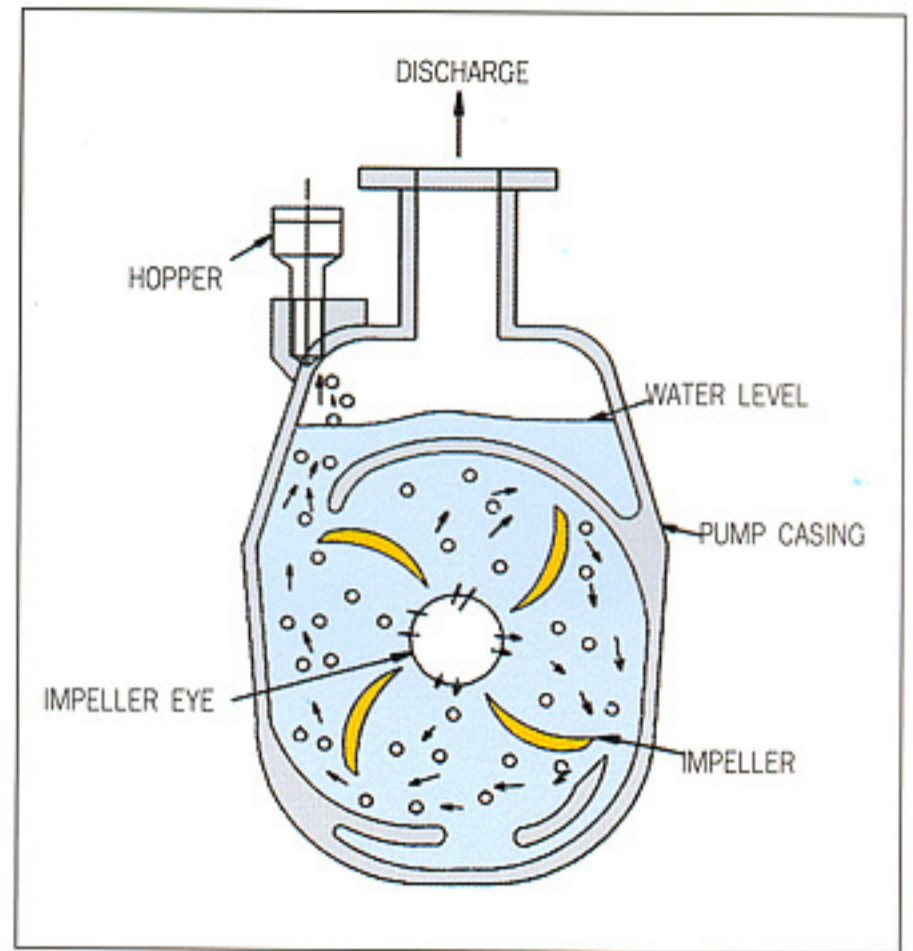
But oil lubricated bearing can be fitted if the customer requires it.

■ **Self Priming System**

Before starting the pump, the air vent valve is opened and water is kept in casing up to the minimum water level.

When the pump is started, the water in casing is circulated by rotation of impeller, and thereby vacuum is produced in the impeller eye, as a result the air in suction piping is sucked and discharged in the form of bubbles.

These air bubbles after being separated from water in the upper part of casing are released to atmosphere through the hopper ; in this way self-priming action is effected.

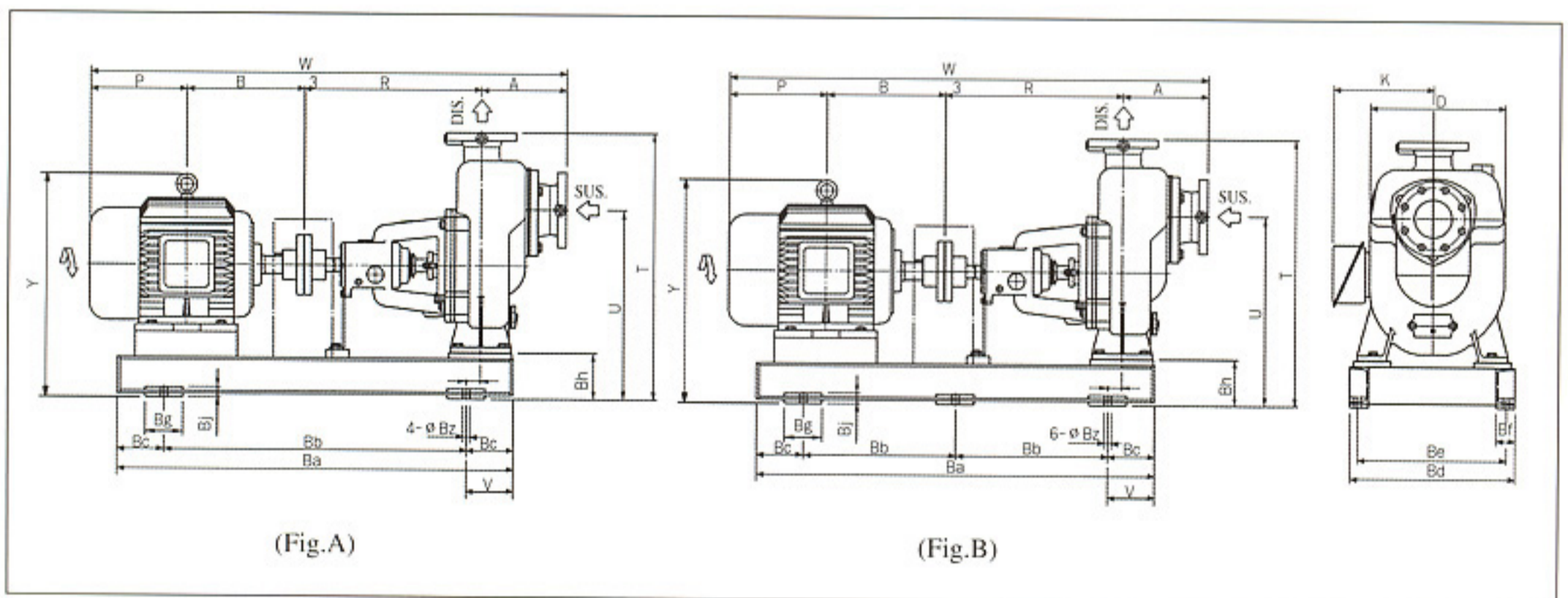


■ **Standard Accessories**

Baseplate	1
Discharge pressure gauge	1
Suction compound gauge	1
Gauge stand	1
Gauge root valve	2
Hopper	1
Coupling cover	1

■ **Standard Spare Parts**

- 1 pump set of the following spare is supplied for 1 ship.
- Gland packing or mechanical seal
- Coupling bolt, nut & washer, rubber ring
- Complete set of rotating element (if required)



(Fig.A)

(Fig.B)

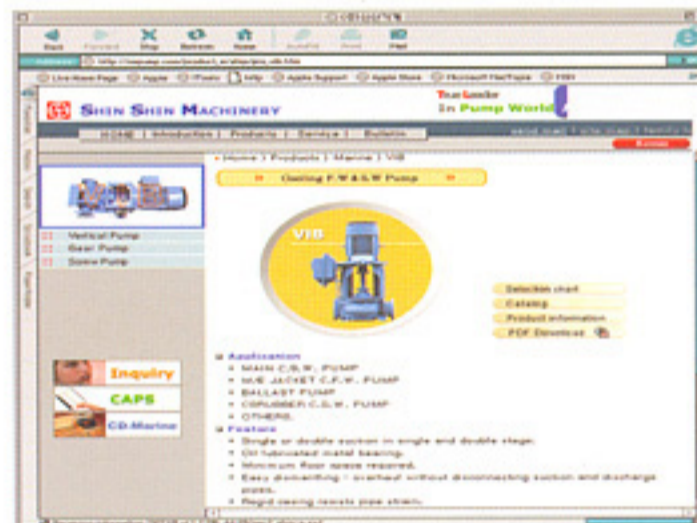
■ Dimensions for the standard unit driven by IEC standard motor

Type	FG	Motor		Bore(mm)		Size(mm)										Common(mm)								Weight(kg)					
		Kw	rpm	Suc	Del	A	B	D	K	P	R	T	U	V	W	Y	Ba	Bb	Bc	Bd	Be	Bf	Bg	Bh	BJ	Bz	Body	Base	Motor
EHS-50B	A	1.5	1800	50	40	178	169	265	158	159	355	523	365	248	864	355	700	450	125	315	280	40	80	95	25	15	47	28	24
		2.2					187			169					892	377													32
EHS-65B	A	2.2	1800	65	50	188	187	262	199	169	355	523	365	258	902	377	700	450	125	315	280	40	80	95	25	15	48	28	32
		3.7					200			182					928														39
EHS-65C EHS-65CX	A	3.7	1800	65	50	188	200	313	199	182	355	570	415	243	928	397	750	500	125	350	315	40	80	95	25	15	63	32	39
		5.5					239		232	205					268	990			417										800
EHS-80B	A	3.7	1800	80	65	230	200	276	199	182	365	570	385	285	980	397	750	500	125	350	315	40	80	95	25	15	68	32	39
		5.5					239		232	205					313	1042			417										800
EHS-80C	A	7.5	1800	80	65	205	258	337	217	224	470	670	470	295	1160	510	950	600	175	410	365	50	100	120	28	19	93	41	70
	B	11					323		273	270				315	1271	489			1050									400	125
EHS-80D	B	11	1800	80	65	215	323	384	273	270	470	720	520	255	1281	573	1050	400	125	440	395	50	100	120	28	19	103	48	108
		15					345			292				325	1325	573			325										136
EHS-100C	B	11	1800	100	80	225	323	358	273	270	470	700	495	265	1291	572	1050	400	125	440	395	50	100	120	28	19	96	48	108
		15					345			292				265	1335				265										136
EHS-125C	B	15	1800	125	100	283	345	353	273	292	470	720	520	318	1393	572	1050	400	125	440	395	50	100	120	28	19	146	49	136
		19					352		295	295				343	1403	591			1100									150	51
EHS-150C	B	19	1800	150	125	325	352	400	297	295	470	790	570	390	1445	616	1100	400	150	440	395	50	100	120	28	19	166	51	161
		22					371			314					1483				1483									177	
		30					377			331					331				365									1506	665
EHS-40A 2P	A	0.75	3600	40	32	150	169	207	132	137	355	427	327	215	785	312	700	450	125	290	255	40	80	95	25	15	29	24	14
		1.5							158	169					836	327												24	
		2.2							187	169					864	349												28	32
		3.7							200	182					890	349												28	39
EHS-50B 2P	A	5.5	3600	50	40	178	239	265	217	205	355	523	365	268	980	445	800	500	150	315	280	40	80	95	25	15	47	35	56
EHS-65B 2P	A	11	3600	65	50	188	323	262	273	270	355	548	390	308	1139	507	950	600	175	335	290	50	100	120	28	19	48	41	108



Homepage : <http://www.sspump.com>

E-mail : sales@sspump.com



SHIN SHIN MACHINERY CO., LTD.

Head Office & Factory

940-13 Yerim-ri, Chongwan-Myen, Gijang-Gun, Pusan, Korea.

Phone : (051) 727-5300~4

Telefax: (051) 727-5305~8

Seoul Office

Phone : +82-2-752-8419/8403, 778-8832

Telefax: -82-2-755-3156