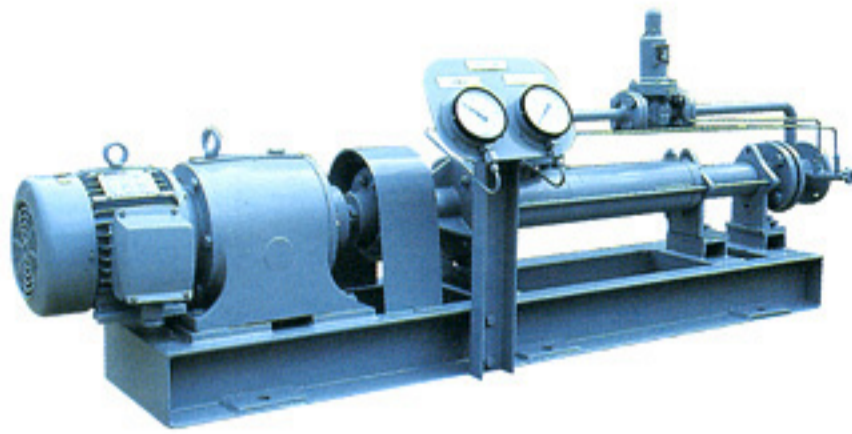


SHIN SHIN MARINE



 SHIN SHIN MACHINERY CO., LTD.

IS MONO SCREW PUMP

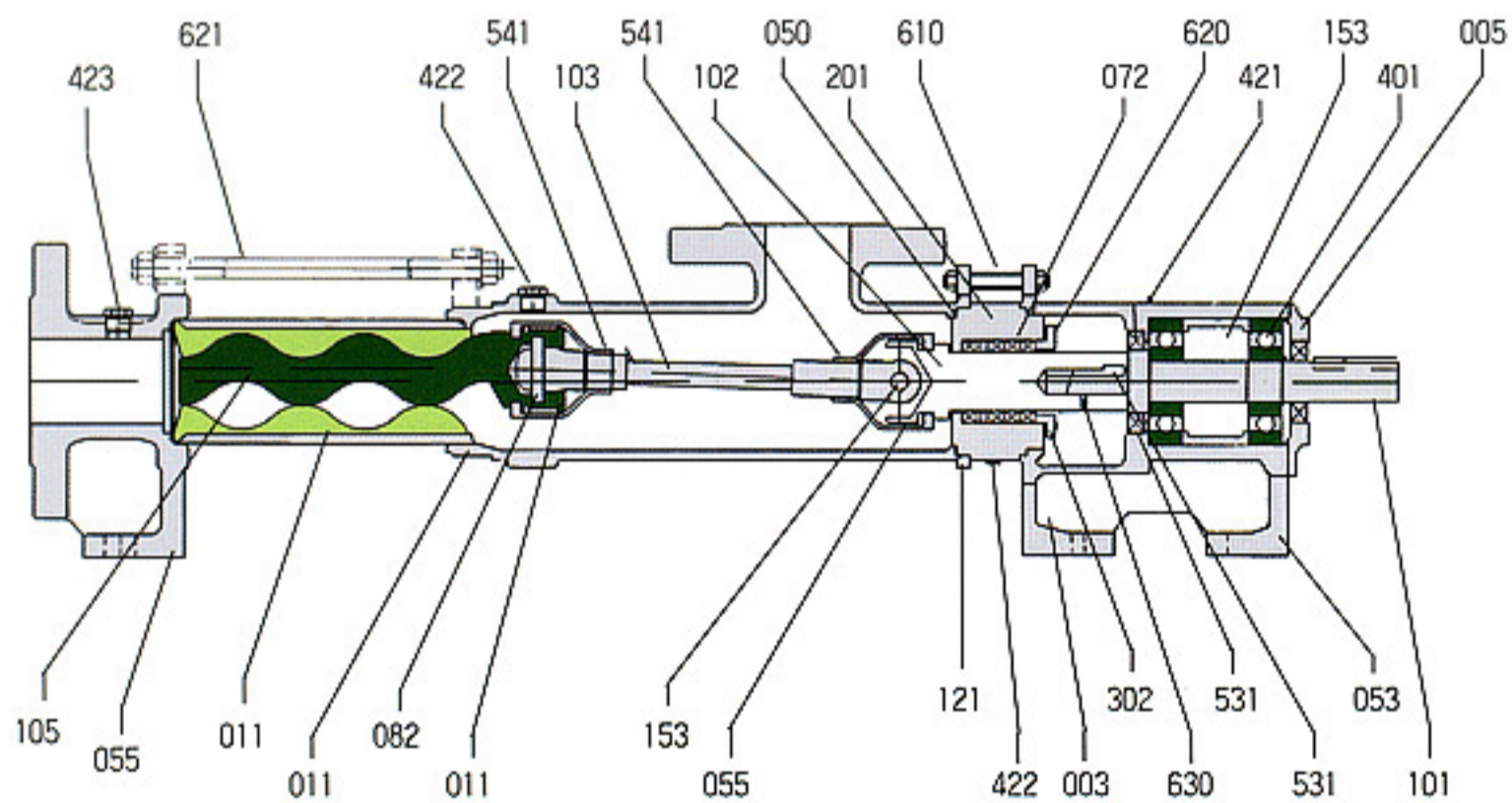


■ Applications

Bilge Stripping Pump
Sludge Pump
Others

■ Principal Particulars

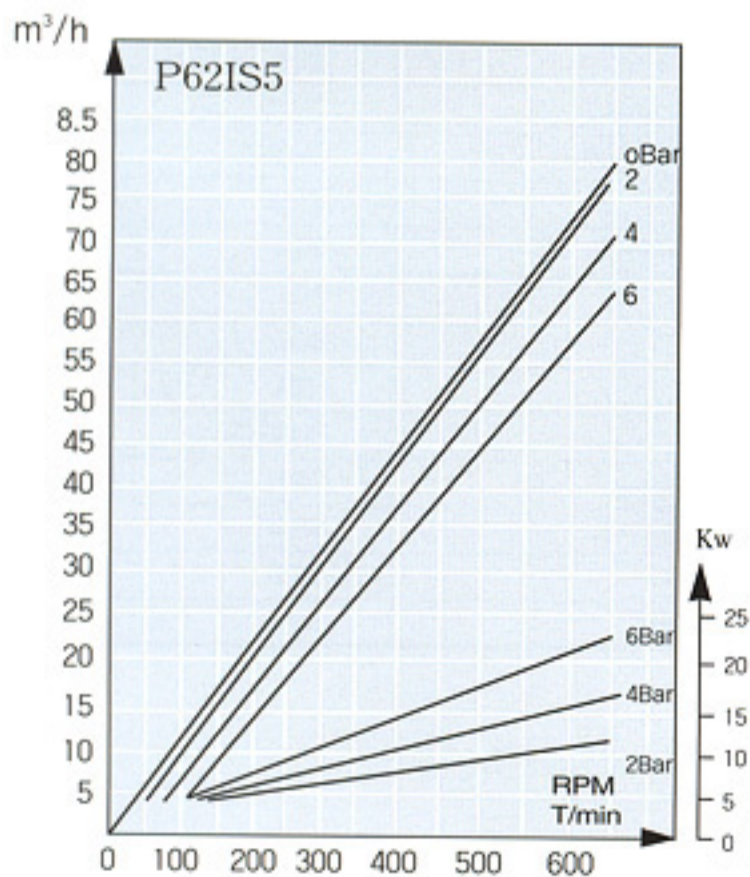
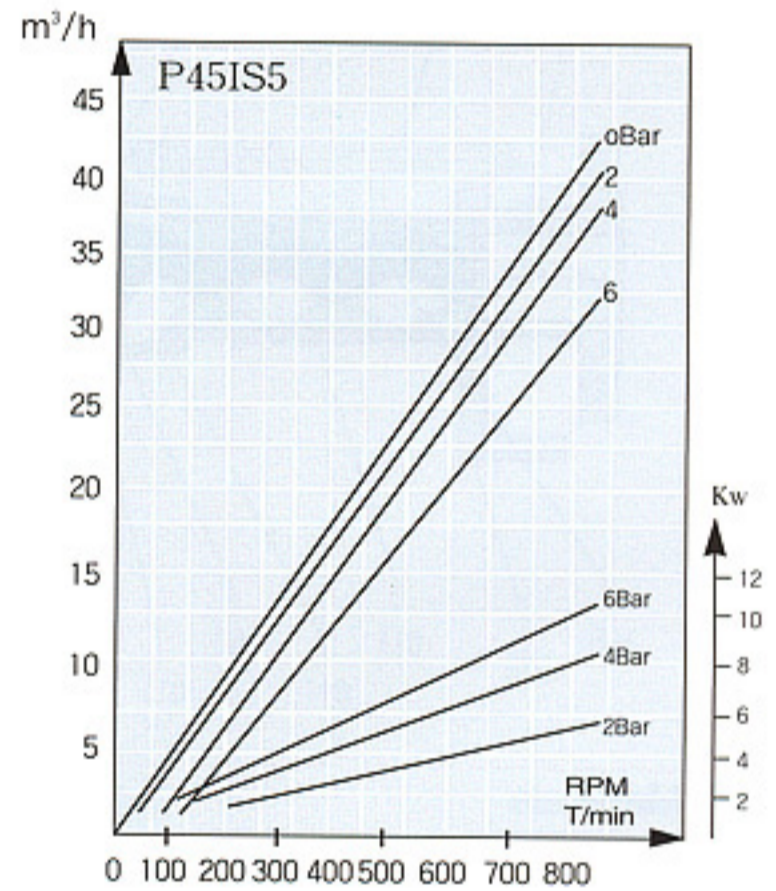
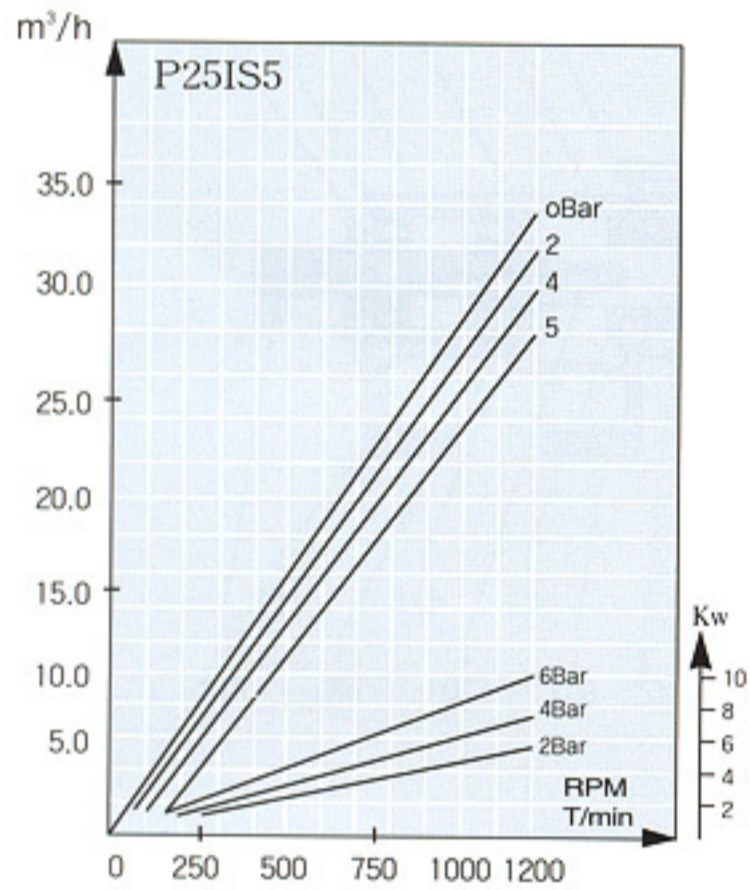
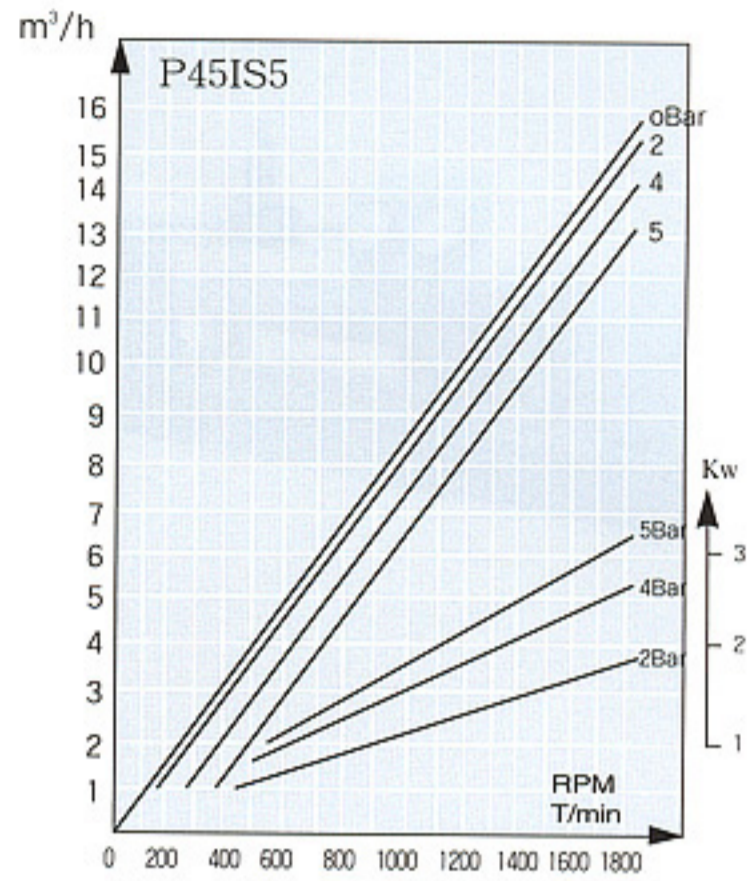
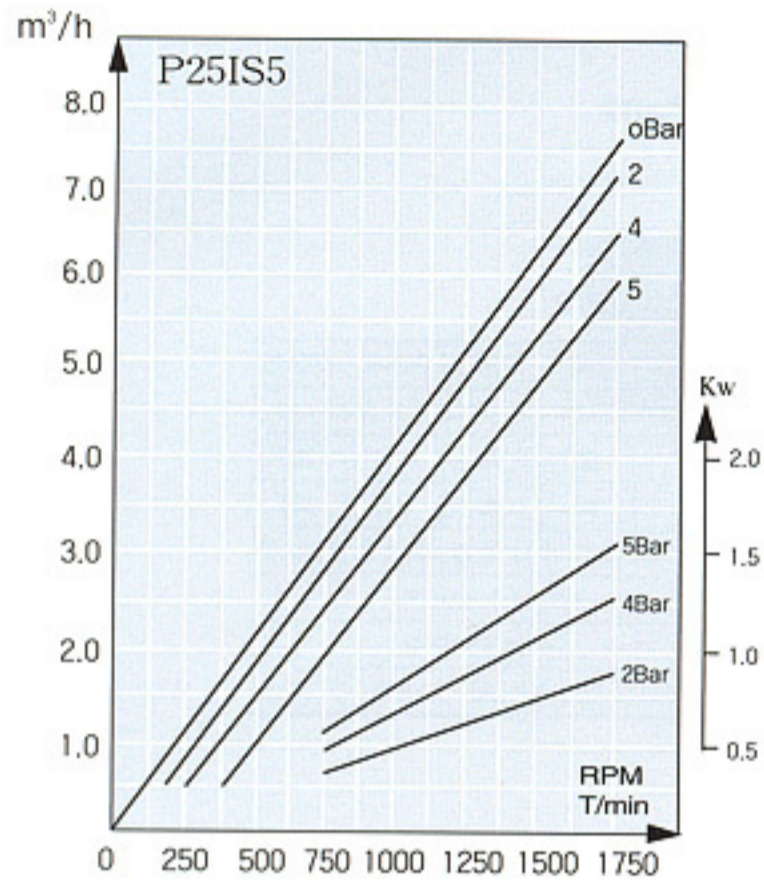
Item	Model	P6IS5	P13IS5	P25IS5	P45IS5	P62IS5
Rotation	Counter Clockwise viewed from driver end					
Bore(mm)	Suction	40	50	80	100	125
	Discharge	40	50	80	100	125
Capacity (m ³ /hr)	Up to 6		Up to 13	Up to 25	Up to 45	Up to 62
Pressure	Up To 5 kg/cm ²					
Stuffing box seal	Gland Packing					
Weight (kg)	117		200	230	650	720



■ Standard Materials

Part No.	Name Of Part	MATERIAL	Q' TY
001	BODY	GC200	1
003	BEARING HOUSING	GC200	1
004	PRESSURE BRANCH	GC200	1
005	BEARING COVER	GC200	1
011	O-RING	RUBBER	1
050	HOLLOW SHAFT	STS304	1
053	SHAFT RING	SM45C	1
055	STOP RING	STS304	2
072	GREASE PACKING	G.P	4
080	KEY	S40C	1
082	PIN	HSS	2
101	DRIVE SHAFT	STS304	1
102	MIDDLE SHAFT	STS304	1
103	CONNECTING ROD	STS304	1
105	ROTOR	STS304	1

Part No.	Name Of Part	MATERIAL	Q' TY
121	LANTERN	STS304	1
153	COLLAR	SGP	1
201	STUFFING BOX	SM45C	1
302	PACKING GLAND	SM45C	1
401	BEARING	STB2	2
421	GREASE NIPPLE	BC6	1
422	NIPPLE	BC6	2
423	NIPPLE	BC6	3
531	OIL SEAL	NBR	1
541	SHEATH	RUBBER	2
610	STUD BOLT	SS41	4
620	STUD BOLT	SS41	2
621	TIE BOLT	SS41	4
630	SET SCREW	SS41	2



■ **Stuffing Box Seal**

As standard, gland packing are used, The stuffing box fitted with gland packing only.

Fitted with gland packing

In case of having negative suction head water or pumping liquid must be supplied to stuffing box housing.

■ **Lubrication of Bearing**

As grease sealed bearing is adopted, supply of grease is not necessary during the service life of bearing.

■ **Relief Valve**

Relief valve can be fitted externally.

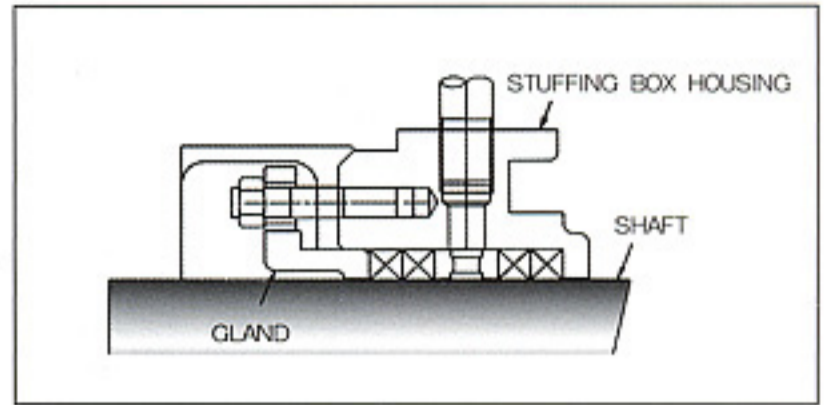
Normally the setting pressure of relief valve is set of 120% of total pressure of pump.

■ **Driving Method**

As standard, geared motor is used, but by the order, belt driven type can be used.

■ **Standard Accessories**

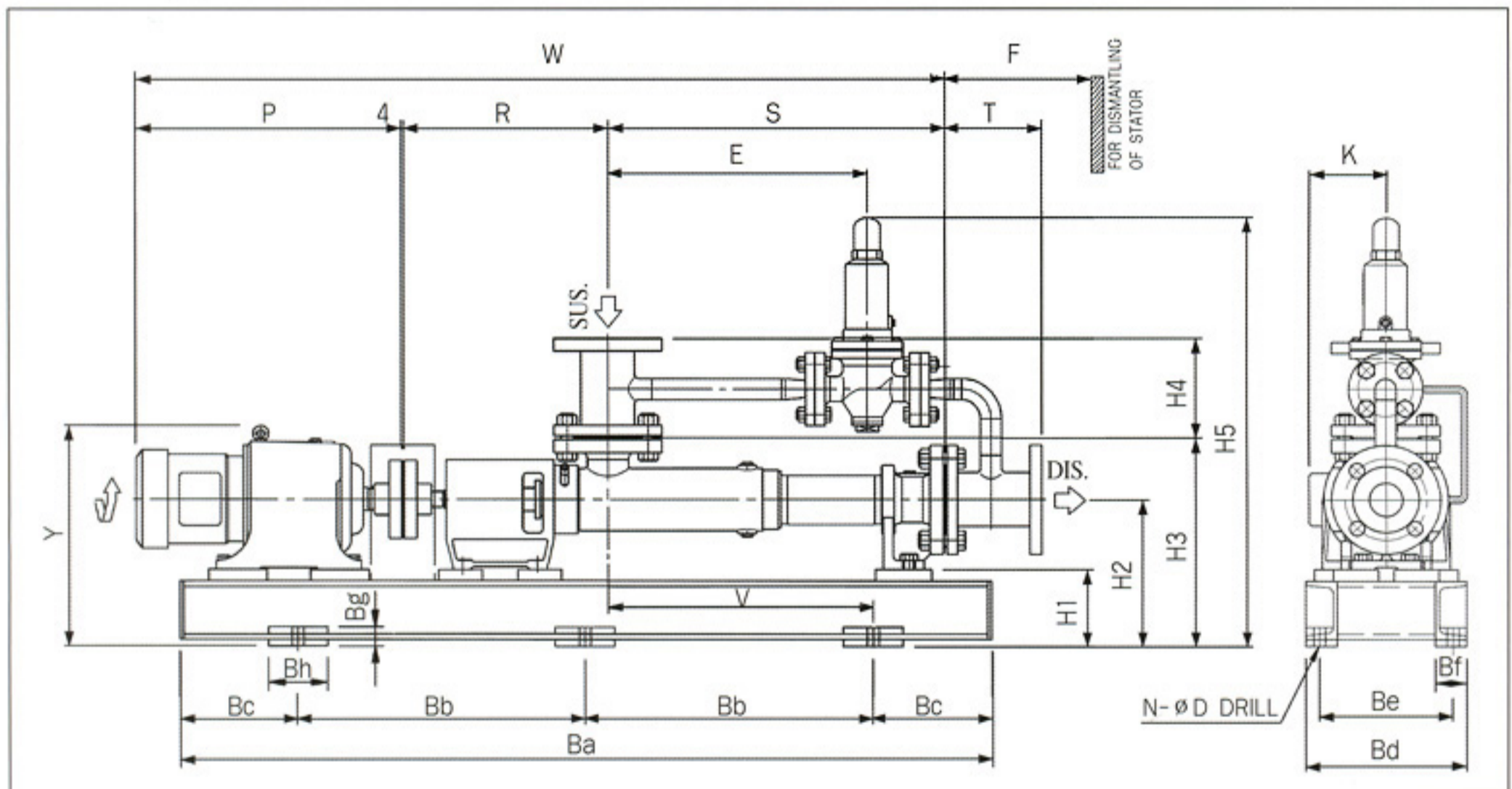
- Base plate.....1
- Discharge pressure gauge.....1
- Suction compound gauge.....1
- Gauge stand.....1
- Gauge root valve.....2
- Coupling cover.....1
- Relief Valve.....1set
- connection pipe with relief valve.....1set



■ **Standard Spare Parts**

1 pump set of the following spare parts is supplied for 1 ship.

- Gland packing or Mechanical seal
- Coupling bolt, Nut & Washer, Rubber ring

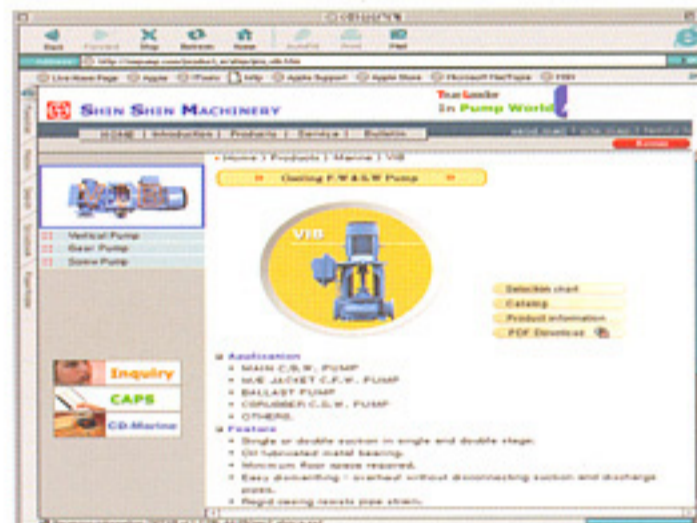


PUMP MODEL	GEARED MOTOR (POWER)	K	P	R	S	T	D	E	F	W	H ₁	H ₂	H ₃	H ₄	H ₅	B _a	B _b	B _c	B _d	B _e	B _f	B _g	B _h	V	WEIGHT (Kg)
P6IS5	1.5Kw	158	613	344	393	125	19	250	250	1353	150	240	325	125	605	1100	400	150	230	185	50	25	80	235	117
PBIS5	2.2Kw 3.7Kw	205	690	406	515	140	24	350	300	1614	195	295	395	140	695	1350	500	175	265	220	65	25	80	332	190 200
P25IS5	3.7Kw 5.5Kw	205	690	516	837	180	24	500	400	2046	170	295	420	180	840	1800	650	250	265	220	65	25	100	574	215 230
P45IS5	7.5Kw 11Kw	320	992	563	979	230	27	530	450	2768	325	455	595	230	950	2200	850	250	450	370	80	30	150	708	635 650
P62IS5	11Kw 15Kw	180	992	648	1308	150	27	680	600	3101	305	445	603	150	1005	2500	1000	250	450	370	80	30	150	1045	670 720



Homepage : <http://www.sspump.com>

E-mail : sales@sspump.com



SHIN SHIN MACHINERY CO., LTD.

Head Office & Factory

940-13 Yerim-ri, Chongwan-Myen, Gijang-Gun, Pusan, Korea.

Phone : (051) 727-5300~4

Telefax: (051) 727-5305~8

Seoul Office

Phone : +82-2-752-8419/8403, 778-8832

Telefax: -82-2-755-3156