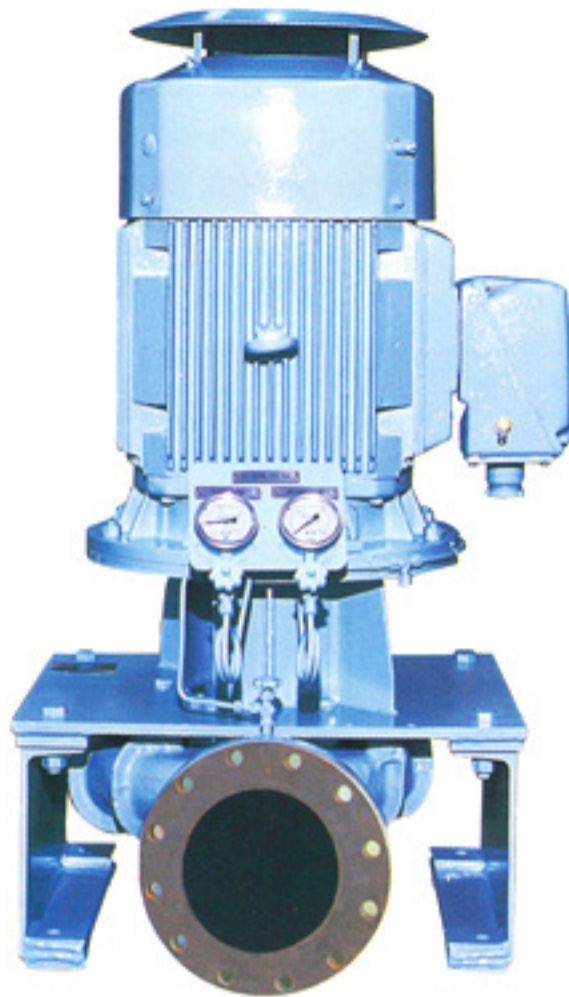


SHIN SHIN MARINE



 SHIN SHIN MACHINERY CO., LTD.



■ Applications

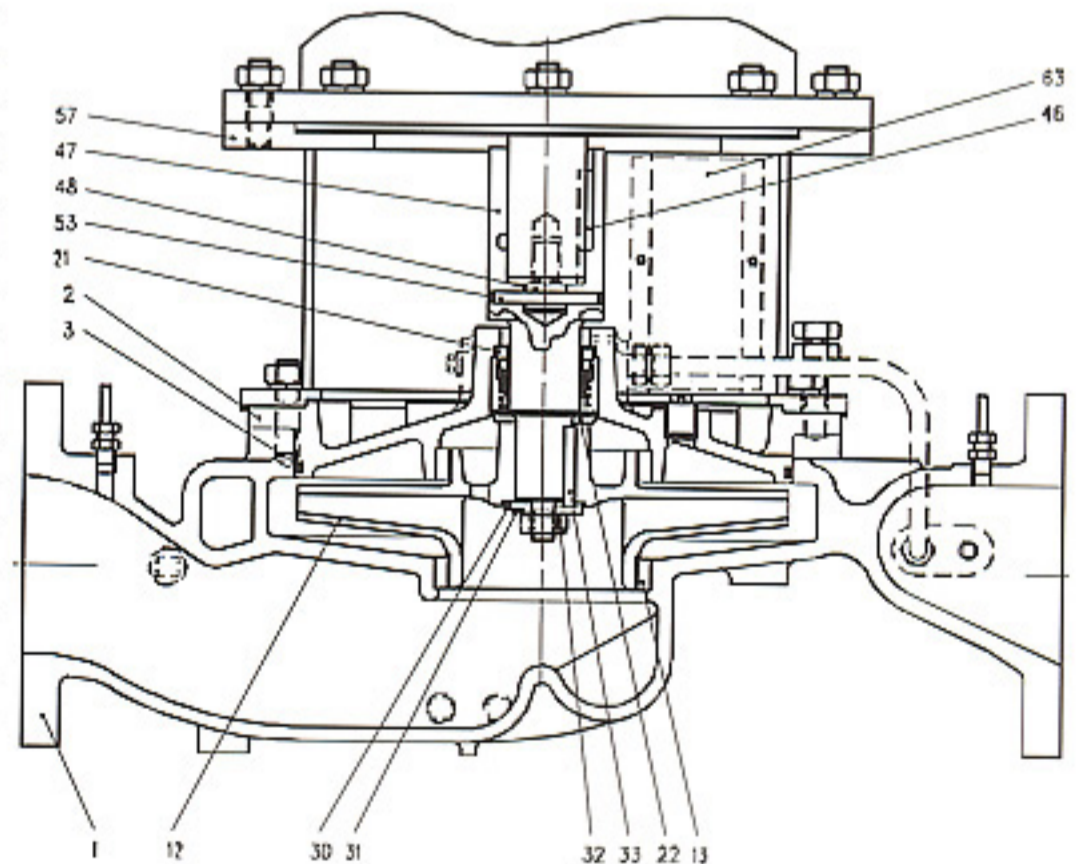
- Piston cooling fresh water pump
- Jacket cooling fresh water pump
- Sea water service pump
- Ballast pump
- Others

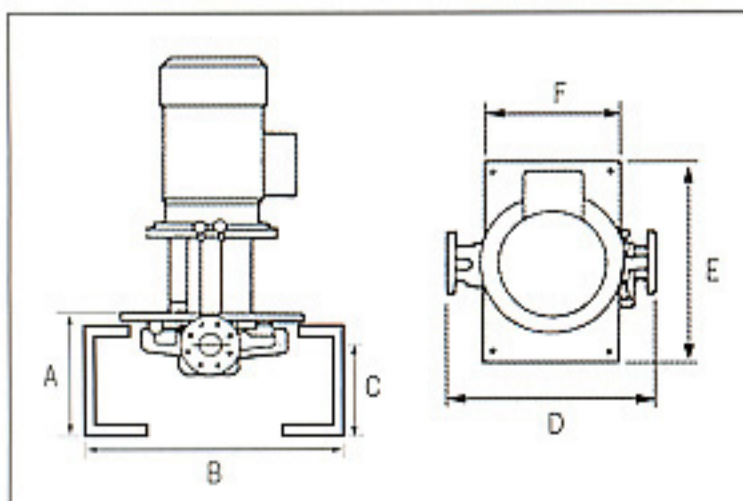
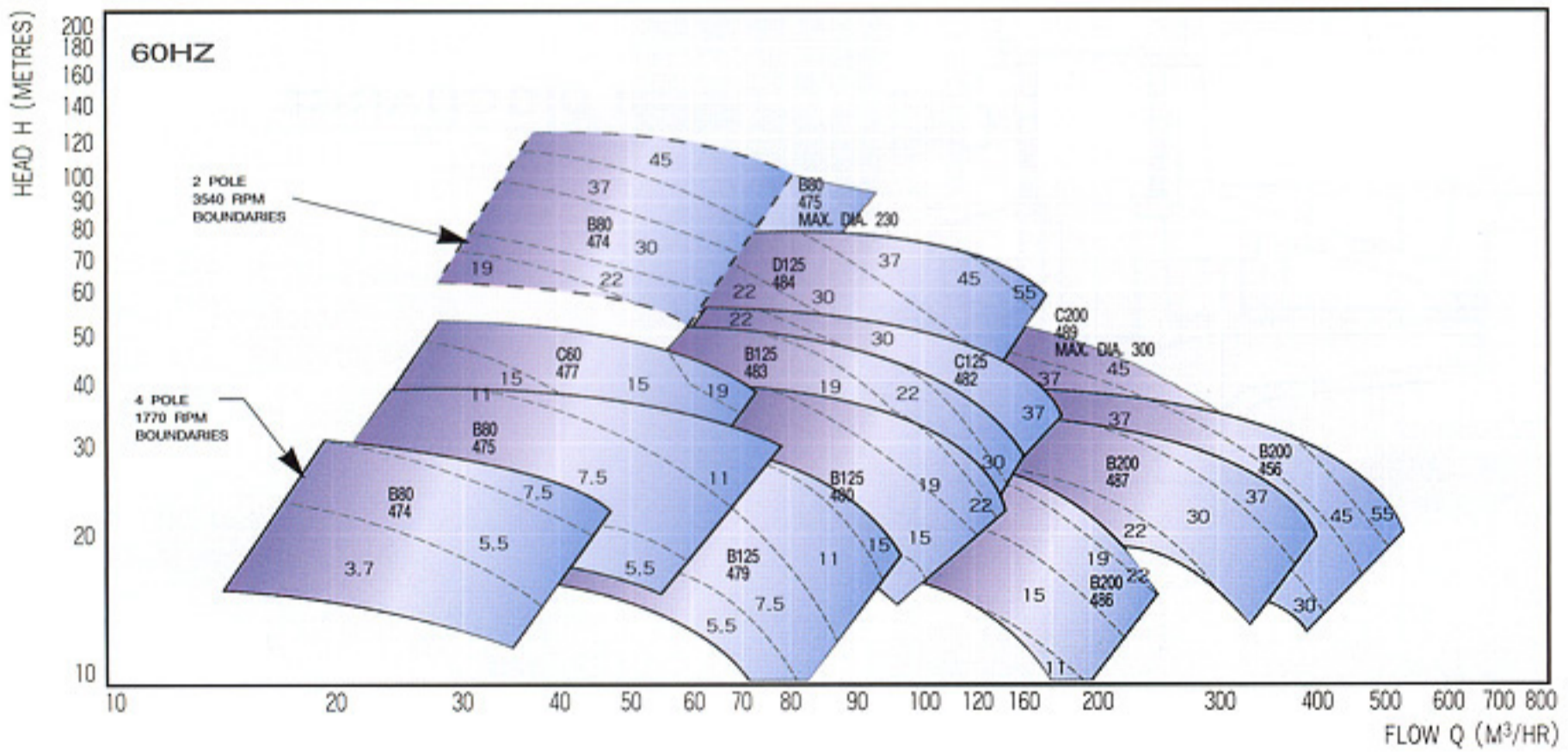
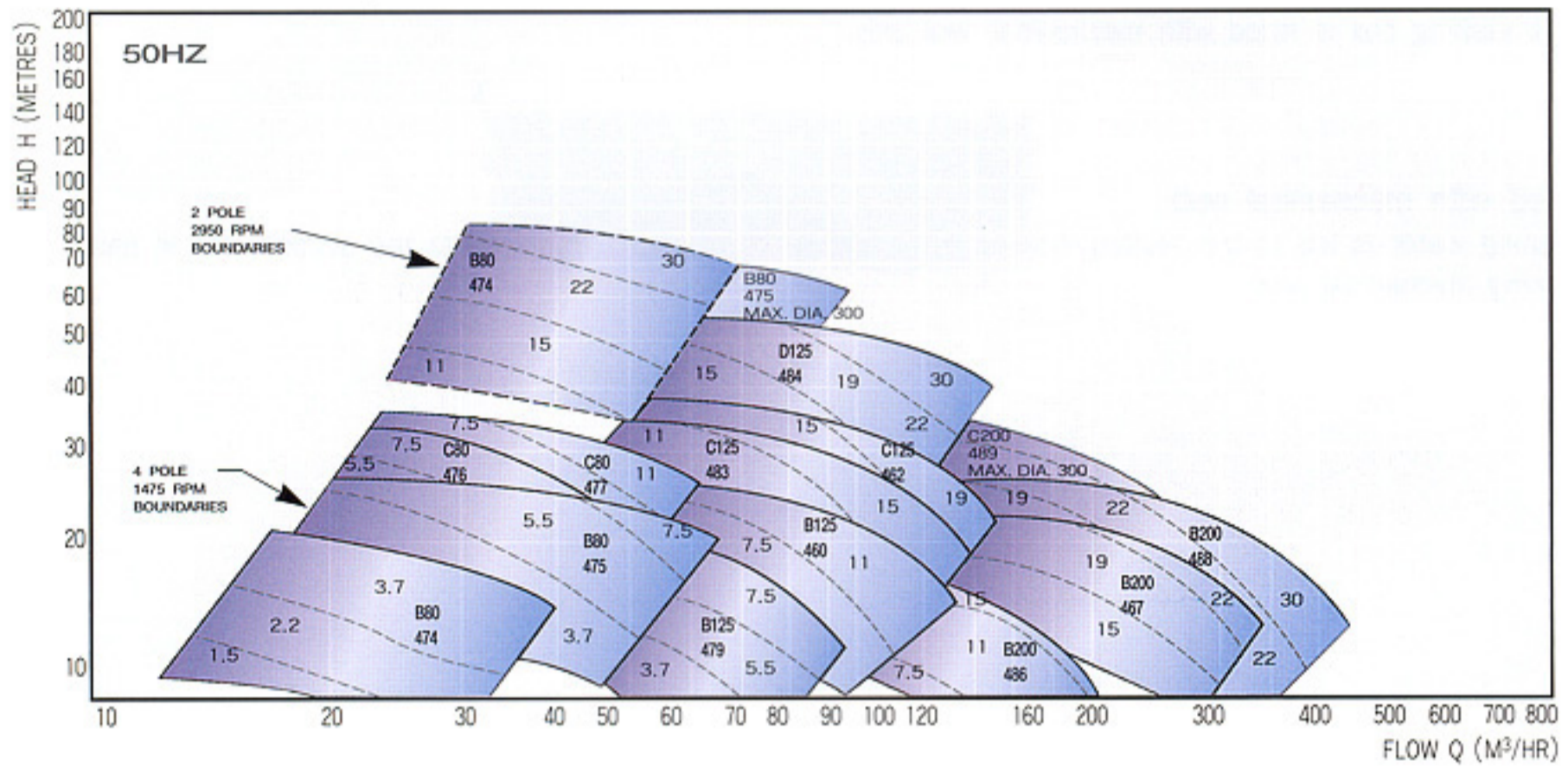
■ Principal Particulars (Single Suction)

Item	Model	B80	C80	B125	C125	D125	B200	C200
Rotation		Clockwise viewed from driver end						
Suction bore	(mm)	80	80	125	125	125	200	200
Discharge bore	(mm)	80	80	125	125	100	200	200
Stuffing box seal		Mechanical seal						
Weight GC(BC)	(kg)	207(219)	242(250)	232(248)	271(291)	323(349)	328(356)	328(356)
Water filled in casing	(kg)	6	8	12	14	15	27	31

■ Standard Materials

Part No.	NAME OF PART	REQ. NO. FOR 1PUMP	FOR FRESH WATER		FOR SEA WATER	
			NAME	KS	NAME	KS
1	PUMP CASING	1	CAST IRON	GC200	BRONZE	BC6
2	INNER COVER	1	CAST IRON	GC200	BRONZE	BC6
3	'O' RING	1	NBR		NBR	
12	IMPELLER	1	PHOSPHORE BRONZE	PBC2	PHOSPHORE BRONZE	PBC2
13	CASE WEAR RING	2	PSG		PSG	
21	MECHANICAL	1	MECHANICAL			
22	SPRING SLEEVE	1	STAINLESS STEEL	STS304	STAINLESS STEEL	STS304
30	IMPELLER RETAINING WASHER	1	STAINLESS STEEL	STS304	STAINLESS STEEL	STS304
31	LOCK WASHER	1	STAINLESS STEEL	STS304	STAINLESS STEEL	STS304
32	IMPELLER RETAINING NUT	1	STAINLESS STEEL	STS304	STAINLESS STEEL	STS304
33	IMPELLER KEY	1	STAINLESS STEEL	STS304	STAINLESS STEEL	STS304
46	NOTOR KEY	1	STAINLESS STEEL	STS304	STAINLESS STEEL	STS304
47	PUMP SHAFT	1	STAINLESS STEEL	STS304		
48	MOTOR SHAFT	1	CARBON	SM45C	CARBON STEEL	SM45C
53	MOTOR SHAFT PW	1	STAINLESS STEEL	STS304	STAINLESS STEEL	STS304
57	MOTOR SUPPORT	1	STEEL	SS41	STEEL	SS41
63	GUARD	1	STEEL	SS41	STEEL	SS41





■ Dimensions For Single Suction Pumps

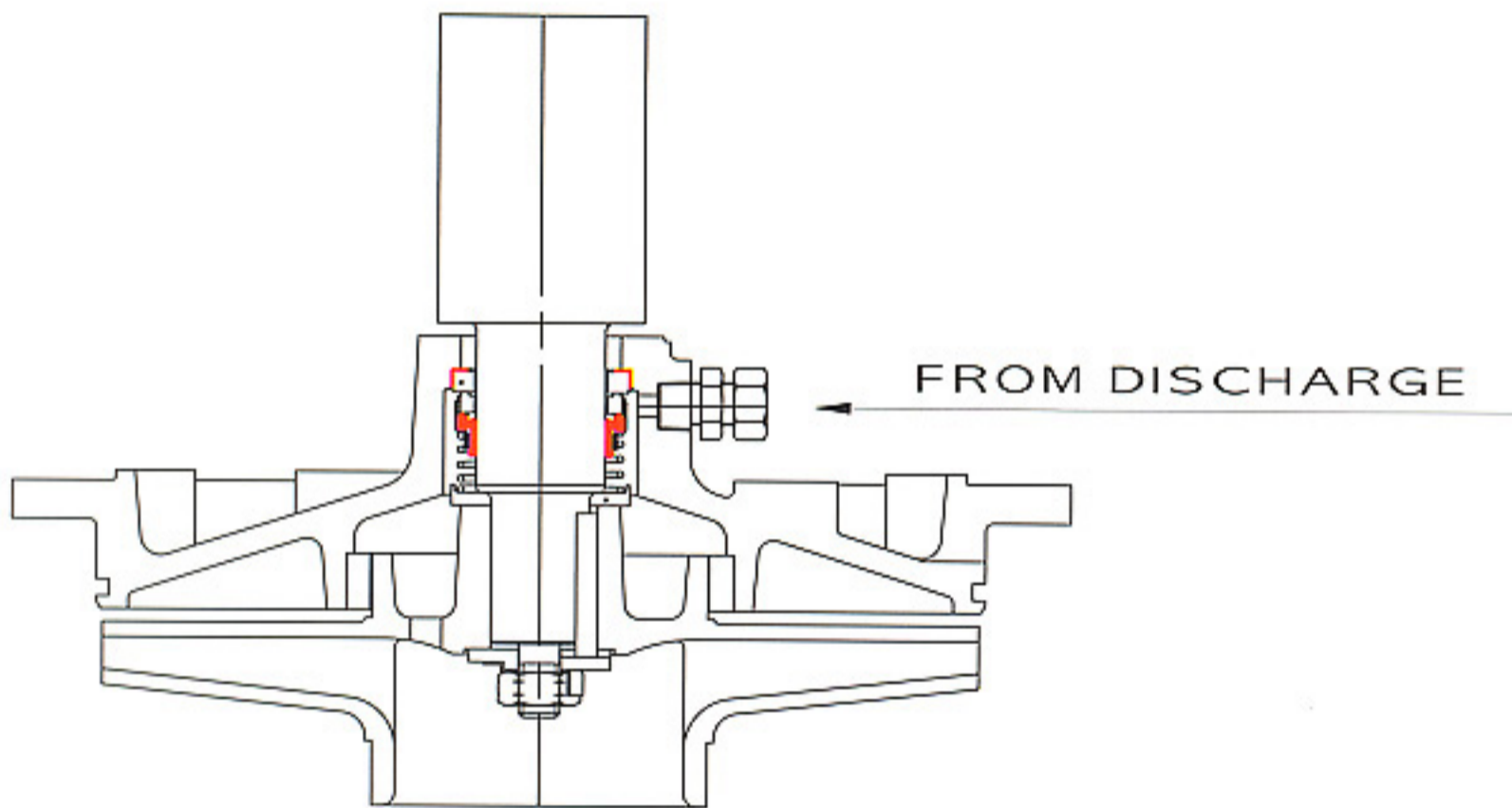
Part No.	Dimensions (mm)						
	Type	A	B	C	D	E	F
B80	427	580	130	580	554	450	26
C80	427	640	128	640	634	540	26
B125	477	580	155	640	554	450	26
C125	477	660	155	720	634	540	26
D125	477	710	168	760	684	590	26
B200	542	686	183	760	704	540	46
C200	542	686	183	800	704	540	46

■ **Stuffing Box Seal**

The stuffing box is fitted with mechanical seal only.

■ **Fitted with mechanical seal**

Flushing water is led to the stuffing box from the discharge side, and returned to the suction side in casing after flushing mechanical seal.



■ **Priming Unit**

When self priming is required, Air Ejector Primer or Liquid Ring Primer(LRP) is available. Liquid Ring Primer can be driven by belt connected with main pump shaft or a separately mounted motor. A guidance for selection of primer is as follows.

Item	Pump Model	B/C80	B/C/D125	B/C200
Air Ejector Primer	KAE I,II	○	○	○

■ **Motor**

The motor for this type of pump must satisfy the following conditions:

Axial thrust

The thrust due to the weight of the rotating element acts downward.
The maximum values are as shown in the following table.

Model	VIC						
	B80	C80	B125	C125	D125	B200	C200
Thrust	34	38	49	58	52	70	83

Unit:Kg

Notes

- The thrust bearing for the motor must be of the fixed type(below 0.7mm) for up and down directions.
- The permissible value of elongation of the shaft end due to thermal expansion is to be less than 1mm.

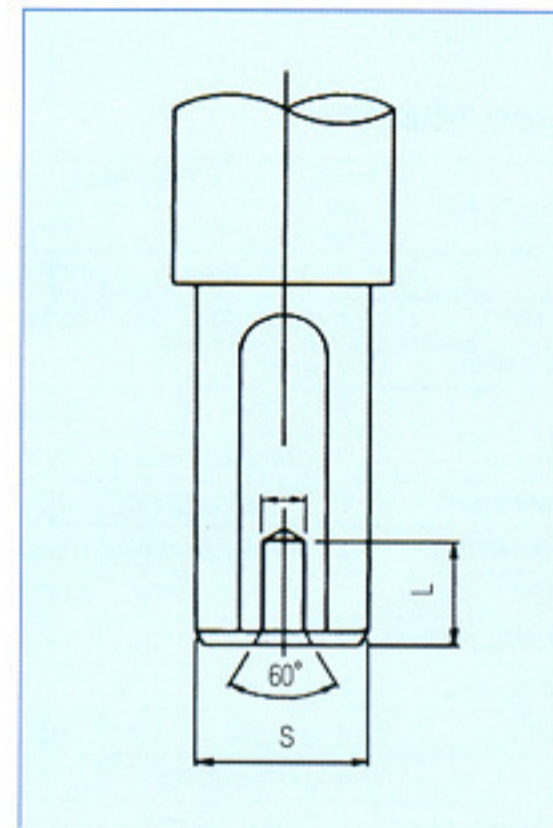
Screw at the motor shaft end

(Bolt for fixing is supplied by Shin Shin)

In order to support the pump rotating element the shaft end must be provided with threaded hole for fitting the motor coupling.

Rectangularity and eccentricity for motor flange

The rectangularity of the flange face relative to the axis and the eccentricity of the flange fitting outside diameter must be less than 0.127mm when read from a dial indicator.



Shaft end deflection

The shaft end deflection must be less than 0.05mm when read from a dial indicator.

Motor Shaft(S)	D	Lmin
~38(7.5KW)	M12	22
~48(22KW)	M16	22
~85(150KW)	M16	22

Unit:mm

■ **Standard Accessories**

- Discharge pressure gauge..... 1
- Suction compound gauge..... 1
- Gauge board..... 1
- Gauge root valve..... 2
- Sealing pipe..... 1 set

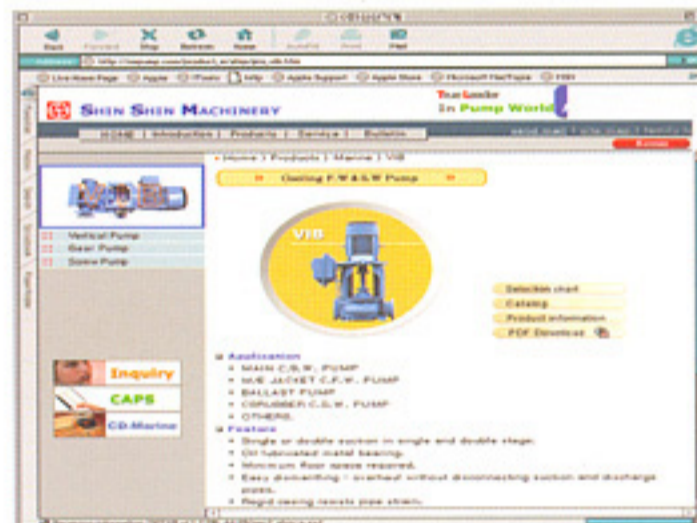
■ **Standard Spare Parts**

- 1 pump set of the following spare is supplied for 1 ship.
- Mechanical seal
- Complete set of rotating element(if required)



Homepage : <http://www.sspump.com>

E-mail : sales@sspump.com



SHIN SHIN MACHINERY CO., LTD.

Head Office & Factory

940-13 Yerim-ri, Chongwan-Myen, Gijang-Gun, Pusan, Korea.

Phone : (051) 727-5300~4

Telefax: (051) 727-5305~8

Seoul Office

Phone : +82-2-752-8419/8403, 778-8832

Telefax: -82-2-755-3156