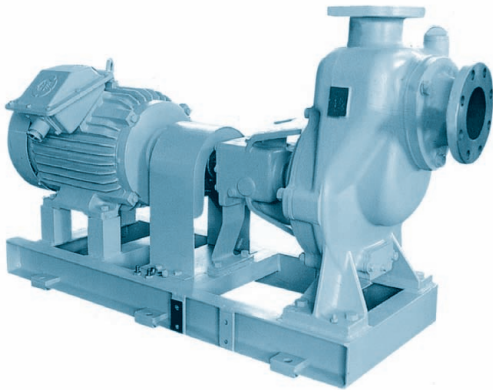


CENTRIFUGAL PUMP

EHS



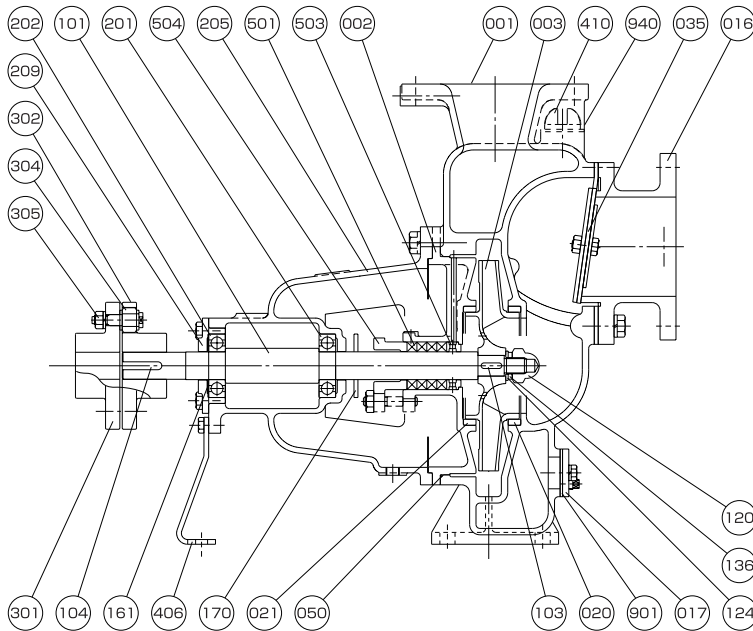
Application

Fire & G.S. Pump
Bilge & Ballast Pump

Feature

Horizontal Single-stage Single-suction
Self-priming Type

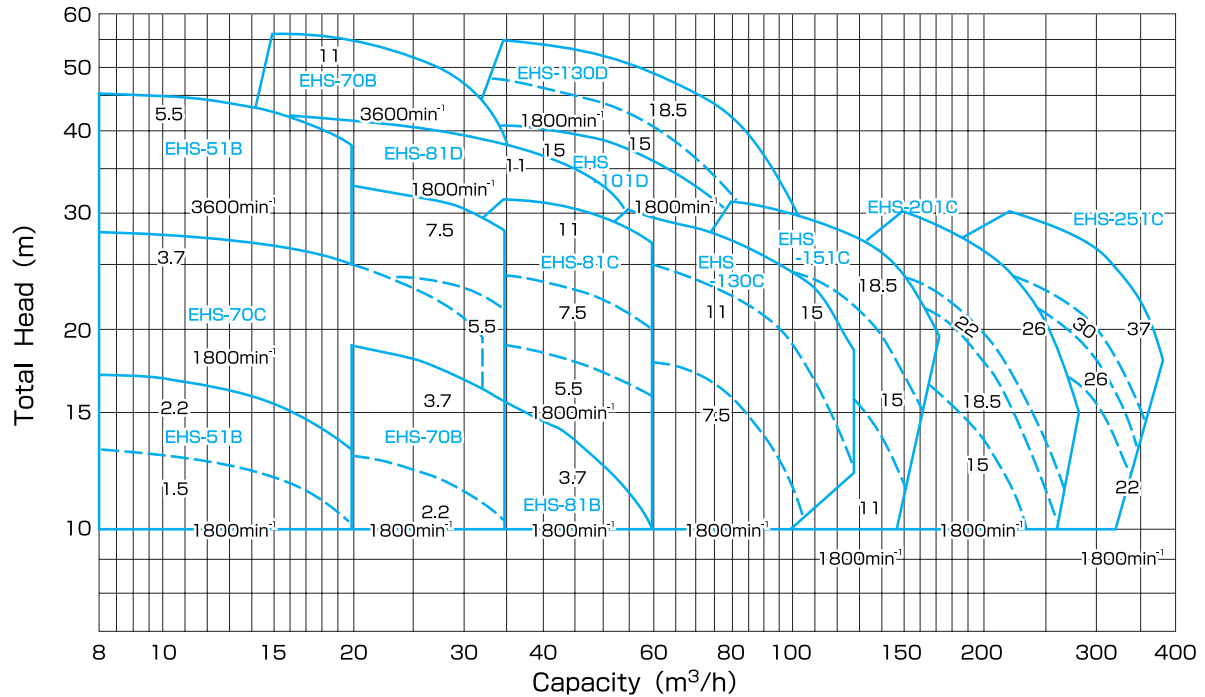
Structure & Material



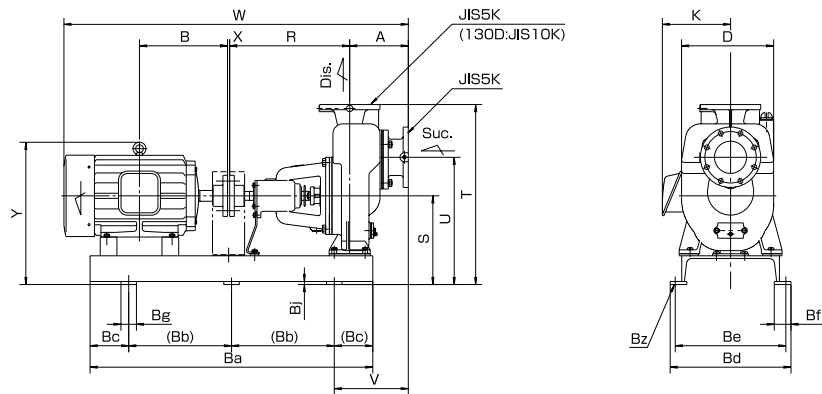
Part No.	Name	Req. No.	Sea Water		Fresh Water	
			Material	JIS	Material	JIS
001	CASING	1	BRONZE	CAC402	CAST IRON	FC200
002	CASING COVER	1	BRONZE	CAC402	CAST IRON	FC200
003	IMPELLER	1	PHOSPHOR BRONZE	CAC502A	PHOSPHOR BRONZE	CAC502A
016	SUCTION COVER	1	BRONZE	CAC402	CAST IRON	FC200
017	DRAIN COVER	1	BRONZE	CAC402	CAST IRON	FC200
020	CASING RING	1	BRONZE	CAC402	BRONZE	CAC402
021	CASING RING	1	BRONZE	CAC402	BRONZE	CAC402
035	CHECK VALVE	1	RUBBER / BRONZE	NBR / CAC402	RUBBER / BRONZE	NBR / CAC402
050	O-RING	1	RUBBER	NBR	RUBBER	NBR
101	SHAFT	1	STAINLESS STEEL	SUS304	STAINLESS STEEL	SUS304
103	KEY	1	STAINLESS STEEL	SUS304	STAINLESS STEEL	SUS304
104	KEY	1	CARBON STEEL	S45C	CARBON STEEL	S45C
120	IMPELLER NUT	1	STAINLESS STEEL	SUS304	STAINLESS STEEL	SUS304
124	IMPELLER WASHER	1	STAINLESS STEEL	SUS304	STAINLESS STEEL	SUS304
136	SPRING WASHER	1	STAINLESS STEEL	SUS304	STAINLESS STEEL	SUS304
161	RETAINING RING	1	SPRING STEEL	SUP6	SPRING STEEL	SUP6

Part No.	Name	Req. No.	Sea Water		Fresh Water	
			Material	JIS	Material	JIS
170	FLINGER	1	RUBBER	NBR	RUBBER	NBR
201	BALL BEARING	1	BEARING STEEL	SUJ2	BEARING STEEL	SUJ2
202	BALL BEARING	1	BEARING STEEL	SUJ2	BEARING STEEL	SUJ2
205	BEARING HOUSING	1	CAST IRON	FC200	CAST IRON	FC200
209	BEARING COVER	1	CAST IRON	FC200	CAST IRON	FC200
301	COUPLING	1	CAST IRON	FC200	CAST IRON	FC200
302	COUPLING	1	CAST IRON	FC200	CAST IRON	FC200
304	COUPLING RING	8	RUBBER	NBR	RUBBER	NBR
305	COUPLING BOLT&NUT	8	MILD STEEL	SS400	MILD STEEL	SS400
406	SUPPORT	1	MILD STEEL	SS400	MILD STEEL	SS400
410	PRIMING CAP	1	BRONZE	CAC402	BRONZE	CAC402
501	GLAND PACKING	4	CARBONIZED FIBER	-	CARBONIZED FIBER	-
503	LANTERN RING	1	BRONZE	CAC402	BRONZE	CAC402
504	GLAND	1	BRONZE	CAC402	BRONZE	CAC402
901	GASKET	1	RUBBER	NBR	RUBBER	NBR
940	GASKET	1	RUBBER	NBR	RUBBER	NBR

Performance



Dimension



Model No.	Motor		Bore		Dimension (mm)																					
	kW	min ⁻¹	Suc.	Dis.	A	B	D	K	R	S	T	U	V	W	X	Y	Ba	Bb	Bc	Bd	Be	Bf	Bg	Bj	Bz	
EHS-51B	1.5	1800	50	50	178	168.5	254	188	355	270	538	380	238	867	3	365	700	450	125	325	290	55	50	12	4-φ15	
	2.2	193			197	245		914						375												
	5.5	3600			239	245		990						428		800										500
EHS-70B	2.2	1800	65	65	188	193	262	197	355	270	538	380	248	924	3	375	700	450	125	325	290	55	50	12	4-φ15	
	3.7	200			212	944		416						800		500										150
	11	3600			323	285		1154						500		1000										700
EHS-70C	3.7	1800	65	65	188	200	313	212	355	290	585	430	248	944	3	436	800	500	150	390	350	65	60	12	4-φ15	
	5.5	239			245	1000		900						550		175										
	7.5	258			273	1039		900						550		175										
EHS-81B	3.7	1800	80	80	230	200	276	212	365	290	585	400	300	996	3	436	800	500	150	390	350	65	60	12	4-φ15	
	5.5	239			245	1132		1171																		
EHS-81C	7.5	1800	80	80	205	258	337	245	470	320	670	470	265	1171	3	478	1000	350	150	470	430	65	60	12	6-φ19	
	11	323			285	1286		550						1100		400										
EHS-81D	11	1800	80	80	215	323	384	285	470	345	720	520	275	1296	3	575	1100	400	150	470	430	65	60	12	6-φ19	
EHS-101D	15	1800	100	100	225	345	400	285	470	370	745	545	285	1348	3	600	1100	400	150	470	430	65	60	12	6-φ19	
EHS-130C	7.5	1800	125	125	225	258	358	245	470	345	700	495	285	1191	3	503	1000	350	150	470	430	65	60	12	6-φ19	
	11	323			285	1306		575						1100		400										
	15	345			285	1348		575						1100		400										
EHS-130D	15	1800	125	100	280	345	416	285	575	370	770	545	340	1508	3	600	1200	450	150	470	430	65	60	12	6-φ19	
	18.5	351.5			330	1520		630																		
EHS-151C	11	1800	150	150	285	323	353	285	470	345	720	520	345	1366	3	575	1100	400	150	470	430	65	60	12	6-φ19	
	15	345			330	1408		605																		
	18.5	351.5			330	1420		605																		
EHS-201C	15	1800	200	200	325	345	400	285	470	370	810	570	385	1448	3	600	1100	400	150	470	430	65	60	12	6-φ19	
	18.5	351.5			330	1460		630																		
	22	370.5			330	1499		630																		
EHS-251C	22	1800	250	250	335	351.5	500	330	530	430	960	660	365	1530	3	690	1200	450	150	550	500	65	60	25	6-φ19	
	26	370.5			330	1569		705																		
	30	425.5			345	1650		705																		
37														4	705	1300	500									